



**ALASKA DIVISION OF HOMELAND SECURITY &
EMERGENCY MANAGEMENT**
Daily Situation Report
25-345 December 11, 2025



Toll-Free 1.800.478.2337

Anchorage Area 907.428.7000

SEOC 907.428.7100

<u>SEOC Preparedness Level</u> Level 1 Routine Operations	http://ready.alaska.gov	<u>Alaska Military Installation Force</u> <u>Protection Level:</u> FPCON Bravo
<u>NTAS Bulletin</u> There are no current advisories. https://www.dhs.gov/national-terrorism-advisory-system	<u>Maritime Security (MARSEC)</u> Level - 1 Minimum Appropriate Security Measures	

(Significant changes from previous situation reports are red.)

Significant Issues:

State Disaster Declaration – Matanuska-Susitna Borough

Following five days of very strong winds and freezing temperatures, Governor Dunleavy declared a state disaster in the MatSu Borough. Winds damaged property and left thousands without power for multiple days. Facets of the disaster support programs include public assistance, individual assistance and temporary housing assistance. Please see the press release linked below.

Napaskiak Power Disruption

In Napaskiak, Alaska Energy Authority contract staff restored community power yesterday. Yukon-Kuskokwim Health Corporation staff travel conducted a site visit yesterday to assess potential freeze damage to water infrastructure, remote maintenance workers are compiling the report today. The SEOC continues to follow up with local officials and partners as restoration and assessment activities proceed.

Division of Homeland Security and Emergency Management (DHSEM) Public Information:

Governor Dunleavy Declares December 2025 Mat-Su Windstorm a Disaster, Activating State Recovery Programs, see the press release linked [here](#).

For all current press release, please see: <https://ready.alaska.gov/PublicInformation/PressReleases>

Department of Health (DOH):

For resources and current information, see: <https://health.alaska.gov/en/>

Travel Alerts and Conditions:

For current driving conditions, dial 511 or visit: <https://511.alaska.gov/>

Barry Arm Landslide / Tsunami Risk:

For the latest information on the Barry Arm Landslide and Tsunami risk, click here:

<https://dggs.alaska.gov/hazards/barry-arm-landslide.html>

Earthquakes:

United States Geological Service (USGS) Earthquake Information:

<https://www.usgs.gov/programs/earthquake-hazards>

National Tsunami Warning Center: <https://tsunami.gov/>

Alaska Volcanoes:

Great Sitkin Alert Level: **Watch** and Aviation Color Code: **Orange**

Shishaldin Alert Level: **Advisory** and Aviation Color Code: **Yellow**

Yesterday, strong winds picked up loose volcanic ash from Katmai Volcano in the vicinity of Katmai and Valley of Ten Thousand Smokes from the 1912 Novarupta-Katmai eruption, carrying it to the southeast. The National Weather Service had issued a SIGMET yesterday for this low-level event and suggested that the maximum cloud height of 6,000 ft above sea level. SIGMET is no longer active.

For Alaska Volcano updates, go to: <https://www.avo.alaska.edu/>

Air Quality Index (AQI) Advisories:

Fairbanks and North Pole - Air Quality Stage 2 Alert, extended through Thursday evening

For the most up-to-date Air Quality Index Advisories:

<https://dec.alaska.gov/Applications/Air/airtoolsweb/Advisories>

Spills of Oil and Hazardous Substances:

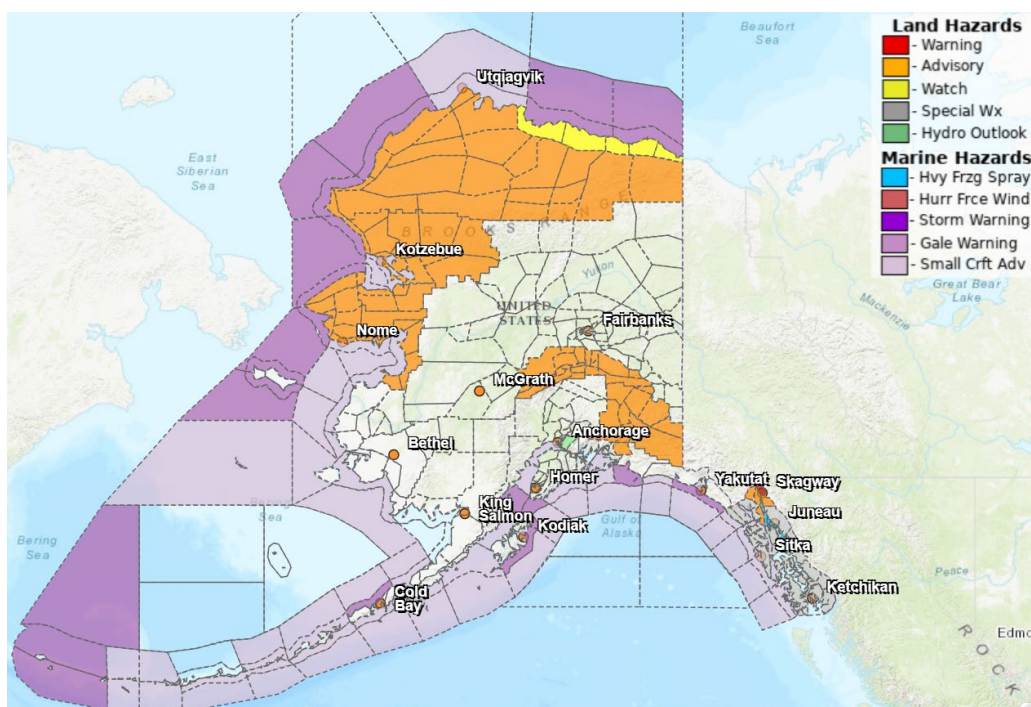
The Alaska Division of Environmental Conservation (ADEC) Spill Prevention and Response page is located at: <https://dec.alaska.gov/spar/ppr/spill-information/response/>

Alaska Cyber Security Information:

State Employees may sign up for cybersecurity notifications and alerts at:

<https://oit.alaska.gov/security>

Significant Weather:



Winter Storm Watch and Winter Weather Advisory – Widespread storm impacting the entire northern and northwestern coastlines of the state with blizzard conditions possible and high westerly winds. Impacts are expected to extend south into the Brooks Range.

Winter Weather Advisory – Denali Borough extending east to Trims Camp, in effect from 3 am Friday to 3 am Saturday. Blowing snow accumulations of 3 to 6 inches expected, winds gusting as high as 50 mph.

Cold Weather Advisory – Copper River Basin and Thompson Pass, until 4 PM Friday. Very cold temps and wind chills of 40 to 50 below zero F.

Hydrologic Outlook – Anchorage, freeze up for small rivers and streams increases likelihood of anchor and shore ice formation and could lead to ice jams and dams developing. This may lead to flooding upstream of any ice jams that form until freeze up is complete.

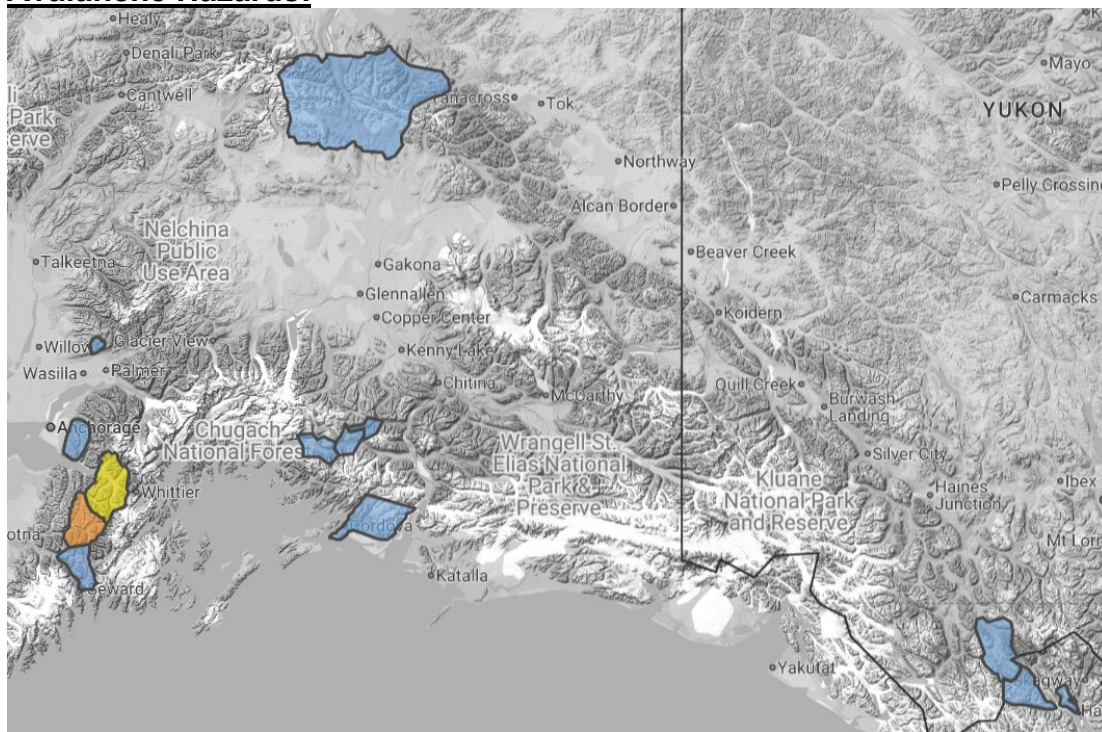
Extreme Cold Warning – White Pass and Skagway, extremely cold wind chills as low as 50 below zero F. In effect until 9 am Friday.

Cold Weather Advisory – Haines Borough and Klukwan, dangerously cold wind chills as low as 25 below zero F. In effect until 9 am Friday.

Special Weather Statement – Another system is on the horizon for central and southern panhandle. This system may arrive as soon as Saturday morning into Sunday morning before switching to rain. Overall impacts are dependent on temperature. For more details, please visit the Juneau Forecast office at the following link <https://www.weather.gov/ajk>

For more information, go to <https://weather.gov/arh>

Avalanche Hazards:



Hatcher Pass – new forecast will be issued 12/12

Chugach State Park – Forecast not available yet, see link below for discussion and observations.

Turnagain Pass and Girdwood – **Moderate** above 1,000; **Low** below treeline.

Summit Lake – Considerable above 2,500; **Moderate** between 1,000-2,500; **Low** below 1,000.

Seward and Lost Lake – Early season conditions with minimal coverage

Valdez Maritime, Intermountain, and Continental – Forecast discussion available, see link

For more information and the most current avalanche conditions, go to <https://alaskasnow.org>

The Next Situation Report will be on **December 12, 2025**. A significant change in situation or threat level will prompt an interim report. This report is posted on the internet at <https://ready.alaska.gov/sitrep>.

To register for email distribution, go to: <http://list.state.ak.us/mailman/listinfo/dhsem.situation.report>.
Direct questions regarding this report to the SEOC at 907-428-7100 or seoc@alaska.gov.